

800 Motor / Motor
IEC 280 M
1500 U/min
80,4 kW
50 Hz

840 Kupplung / Coupling
N-Eupez B180

144.400.1
144.724.0
144.901.1
144.920.1

① Blindflansch für Transport, vor Einbau der Pumpe entfernen, blind flange for transportation, to be removed bevor installation
Gegenflansch, Dichtungen, Schrauben sind beige stellt
Counterflange, gaskets, bolts, by others

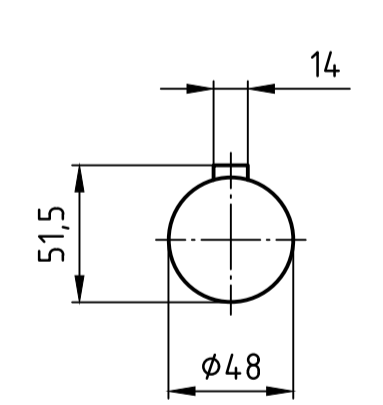
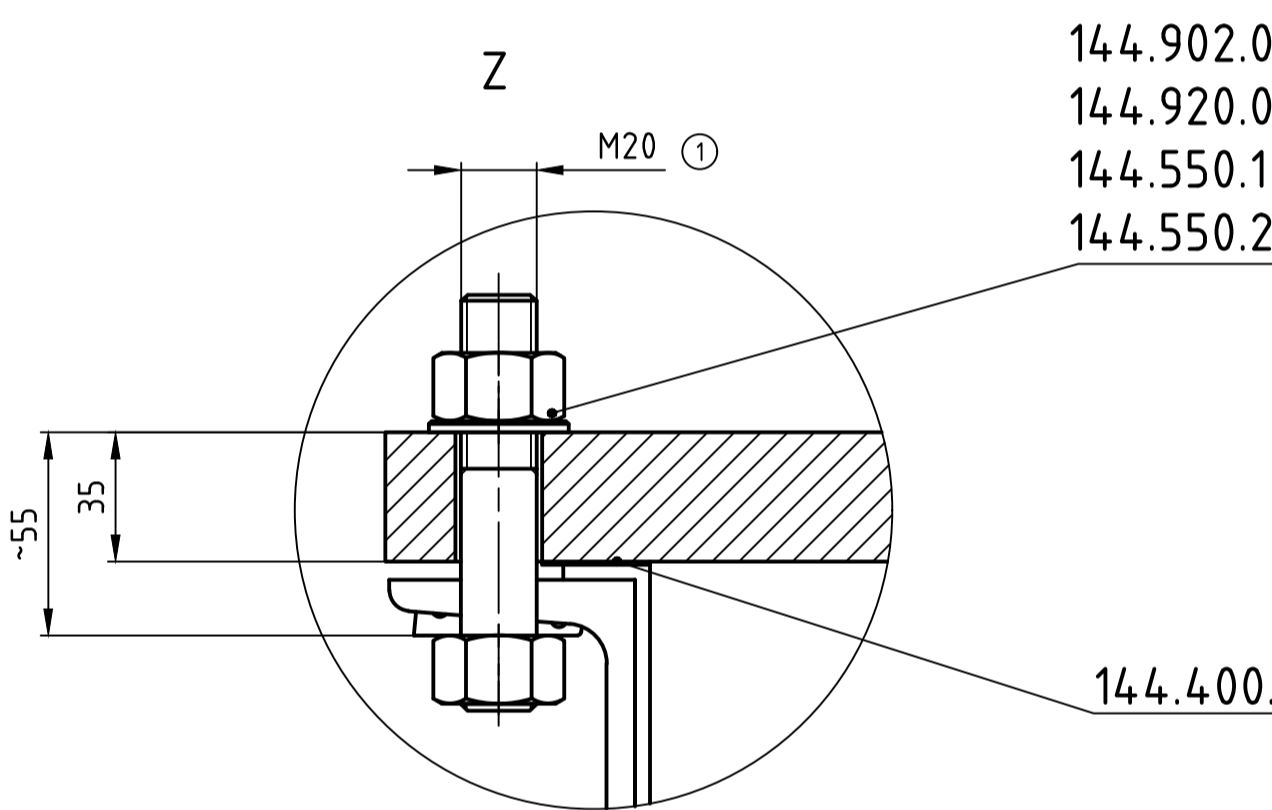
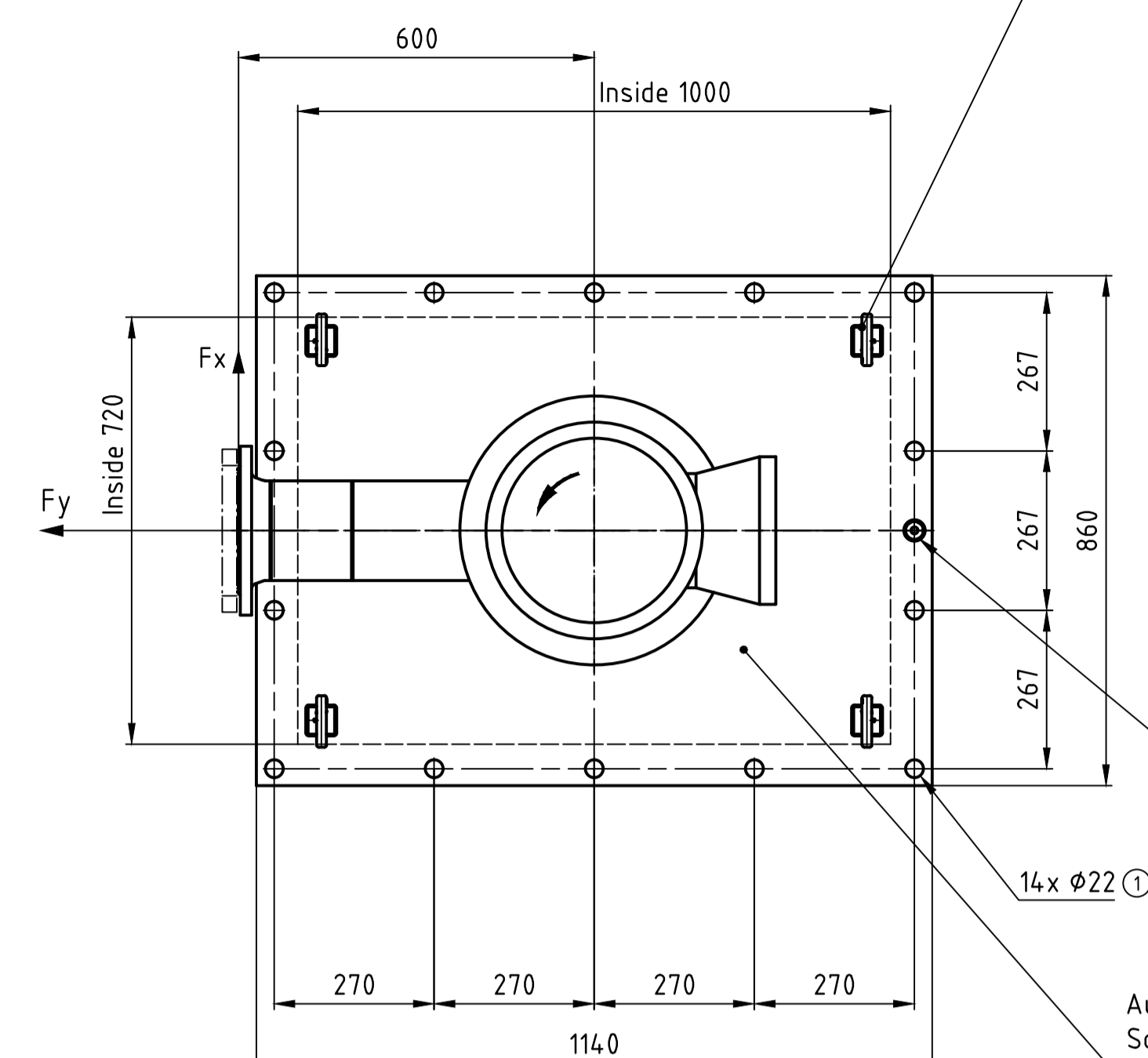
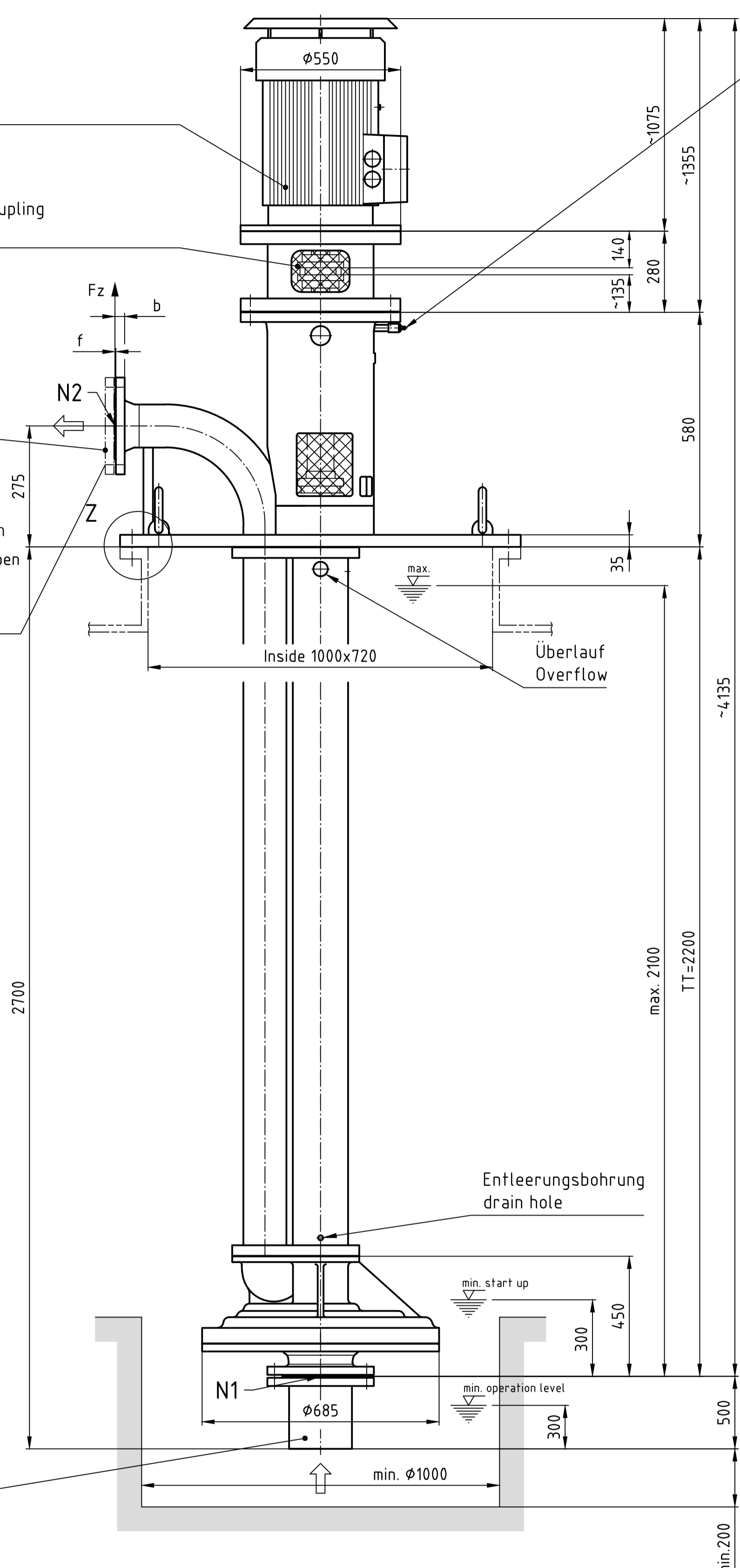
②

Fettanschluß
Grease connection

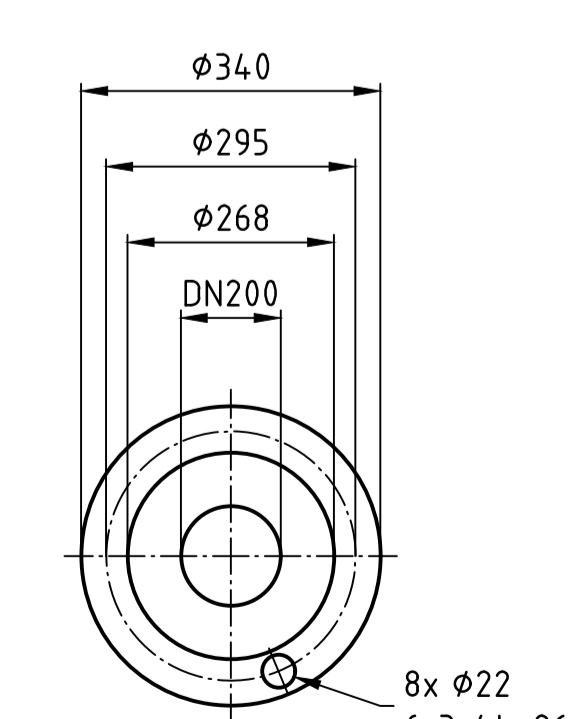
Hebeöse / Lifting lug

144.550.0
144.901.0
Erdungsanschluß M10
Earth connection

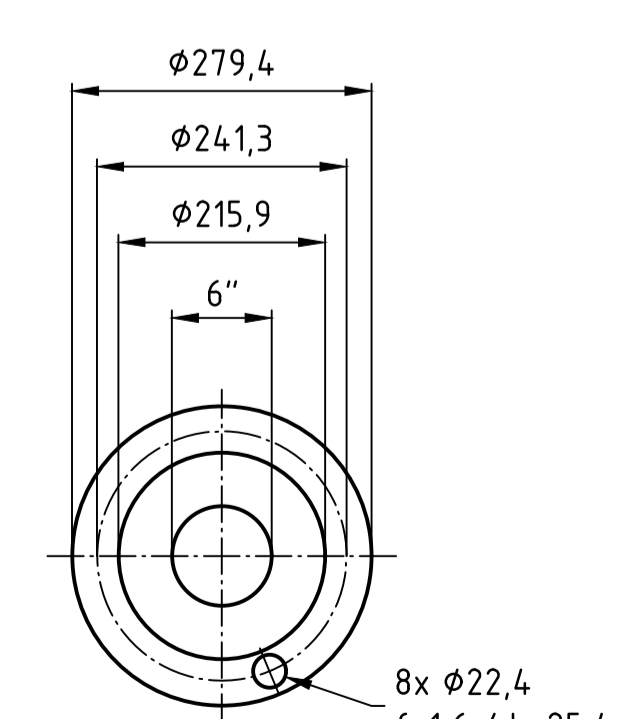
Aufsetzplatte
Sole plate



Pumpenwellenende Passfeder nach:
Shaft End Pump-Key to:
DIN 6885-1



N1 Saugflansch gebohrt nach:
Suction Flange drilled to:
DIN-EN 1092-1, PN10



N2 Druckflansch nach:
Discharge Flange to:
① 6" ASME B16.5 150lbs RF

162.901
162.920
716.000
716.400

Gewichte / Weights	
Pumpe / Pump	- 980 kg
Motor / Motor	- 680 kg
Kupplung / Coupling	- 11 kg
Zubehör / Accessories	- kg
Gesamtgewicht / Total weight	- 1671 kg

Stützen / nozzle	Zulässige Stützenkräfte und Momente im Stillstand und Betrieb. Permitted static and dynamic forces and moments at standstill and during operation.					
	Kräfte / Forces [N]			Momente / Moments [Nm]		
	Fx	Fy	Fz	Mx	My	Mz
N1	-	-	-	-	-	-
N2	3380	3750	3040	2000	1250	1550

REV	NAME	DATE	NAME	DATE	NAME	DATE	REVISION TEXT
1	PREPARED		CHECKED		APPROVED		

STATUS: APPROVED FOR CONSTRUCTION

CUSTOMER: National Iranian Copper Industries Company - Khatoon Abad

PROJECT NAME: NICICO KHATOON ABAD CU ACID PLANT

PROJECT PHASE: IMPLEMENTATION 02

CUSTOMER DOCUMENT NO.: 23A1-V-FRI-200-ME-DW-3534

REPLACES BY: [] REPLACES: [] LANGUAGE: EN

Outotec

DOCUMENT TITLE: MAIN DIMENSION DRAWING
SULPHURIC ACID PLANT (METALLURGICAL)
GENERAL
PRODUCT ACID PUMP

EQUIPMENT NO.: MB03-GP005 / MB03-GP006

PROJECT ID: 106129 | PLANT CODE: CSM01 | PLANT UNIT CODE: ZZ01 | DOCUMENT TYPE: MTA02 | COUNTING NO.: 82811 | REVISION: 1 | SHEET OF SHEETS: /

The content of these documents are the sole property of Outotec Oy. Any rights not expressly granted herein are reserved. Reproduction, transfer or distribution of part or all of the contents in any form without prior written permission of Outotec is prohibited.

Rev.	Issued for information	Designed	Approved	Project Manager	Date
1	Missler	Raub			14.08.2017
0	Fritz	Eldridge			26.07.2017

Employer: NATIONAL IRANIAN COPPER INDUSTRIES COMPANY

Stamp: []

Project / Product: KHATOONABAD SULPHURIC ACID PLANT

DRAWING TITLE: MAIN DIMENSION DRAWING
PRODUCT ACID PUMP
MB03-GP005 / MB03-GP006

size: [] Description: []

Scale: [] Units: [] Sheet: [] of: [] Rev: []

DRAWING NO.: 23A1-V-FRI-200-ME-DW-3534

Kunde: Outotec GmbH & Co. KG | Anlage: Khatoonabad Sulphuric Acid Plant
Client: National Iranian Copper Industries | Usine: 106129

Pos. Nr.: MB03-GP005, MB03-GP006 (STBR) | Best. Nr.: 4500325922 - Khatoonabad
Item No.: [] Order No.: []
Rep no.: [] Cde no.: []

Kom.-Nr.: W103011 / R 1706.1.405 | Pumpen-Nr.: 348651 - 348652
Contract No.: [] Pump No.: []

Nr.	Anz.	Datum	Name	Art der Änderung
03	0	14.08.2017	S. Missler	Kundenschriftkopf
02	1	26.07.2017	S. Fritz	Text hinzu
01	5	13.07.2017	S. Missler	Kundenschriftkopf, Stützenkräfte Standard, Behälterschrauben von M27 in M20

Maßstab: %

Maßstab	Datum	Name
Bearb.	30.06.2017	S. Missler
Gepr.		
Norm	14.08.2017	H. Raub

Abweichungen von der zeichnerischen Darstellung vorbehalten

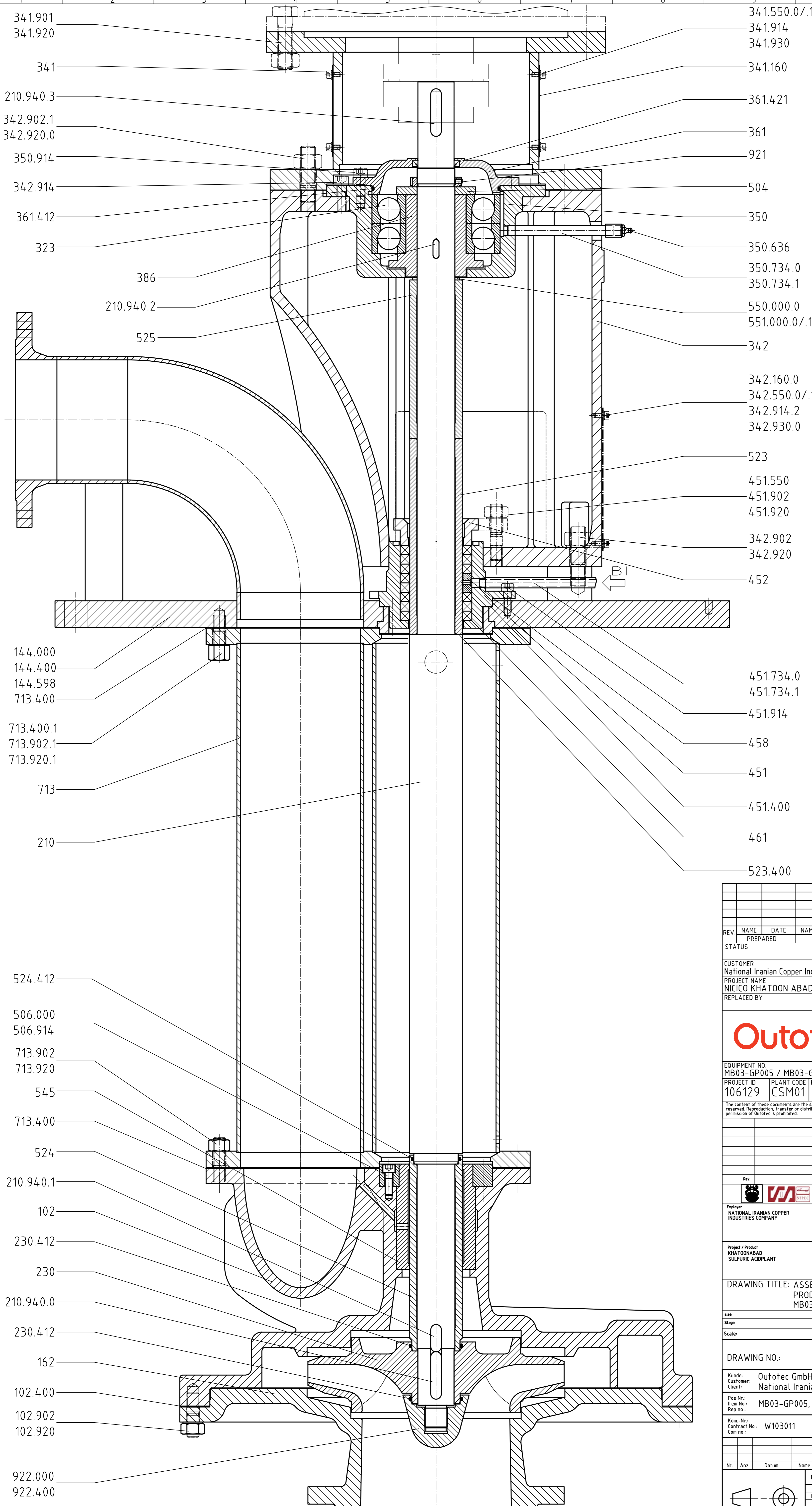
GVSO -150-355 A
Lgfr. 3

Schutzvermerk nach ISO 16016 beachten

RHEINHÜTE PUMPEN

Aufstellungszeichnungs-Nr.: AZ-17061405

Rev: 03



- 341.901
- 341.920
- 341
- 210.940.3
- 342.902.1
- 342.920.0
- 350.914
- 342.914
- 361.412
- 323
- 386
- 210.940.2
- 525
- 341.550.0/1
- 341.914
- 341.930
- 341.160
- 361.421
- 361
- 921
- 504
- 350
- 350.636
- 350.734.0
- 350.734.1
- 550.000.0
- 551.000.0/1
- 342
- 342.160.0
- 342.550.0/1
- 342.914.2
- 342.930.0
- 523
- 451.550
- 451.902
- 451.920
- 342.902
- 342.920
- 452
- 144.000
- 144.400
- 144.598
- 713.400
- 713.400.1
- 713.902.1
- 713.920.1
- 713
- 210
- 451.734.0
- 451.734.1
- 451.914
- 458
- 451
- 451.400
- 461
- 523.400

Zusätzliche Zubehörteile, wie Motor, Kupplung etc., sind in der Aufstellzeichnung dargestellt und positioniert.

Additional Equipment, re. motor, coupling and so on, are mentioned and numbered in the GA-drawing.

REV		NAME	DATE	NAME	DATE	NAME	DATE	REVISION TEXT	
		PREPARED		CHECKED		APPROVED			
STATUS							UNITS	SCALE	SIZE
CUSTOMER							PROJECT PHASE	SITE NO.	
National Iranian Copper Industries Company - Khatoon Abad							IMPLEMENTATION 02		
PROJECT NAME							CUSTOMER DOCUMENT NO.		
NICICO KHATOON ABAD CU ACID PLANT									
REPLACED BY							REPLACES	LANGUAGE	
								EN	
EQUIPMENT NO.							DOCUMENT TITLE		
MB03-GP005 / MB03-GP006							ASSEMBLY DRAWING		
							SULPHURIC ACID PLANT (METALLURGICAL)		
							GENERAL		
							PRODUCT ACID PUMP		
							MB03-GP005 / MB03-GP006		
PROJECT ID	PLANT CODE	PLANT UNIT CODE	DOCUMENT TYPE	COUNTING NO.	REVISION	SHEET OF SHEETS			
106129	CSM01	ZZ01	MTB01	82821		/			
The content of these documents are the sole property of Outotec Oyj. Any rights not expressly granted herein are reserved. Reproduction, transfer or distribution of part or all of the contents in any form without prior written permission of Outotec is prohibited.									
							DOCUMENT ID		
							ALIMAZ		
							ALIMAZ		
							ALIMAZ		
							ALIMAZ		
							ALIMAZ		
Rev.	P.D.I.	Designed		Approved		Project Manager		Date	
Employer		Stamp							
NATIONAL IRANIAN COPPER INDUSTRIES COMPANY									
Project / Product		Khatoonabad SULFURIC ACID PLANT							
DRAWING TITLE: ASSEMBLY DRAWING									
PRODUCT ACID PUMP									
MB03-GP005 / MB03-GP006									
size	Description								
Stage									
Scale	Units	Sheet					Of		
DRAWING NO.:									
Kunde:	Outotec GmbH & Co. KG				Anlage:	Khatoonabad Sulphuric Acid Plant			
Client:	National Iranian Copper Industries				Plant:	106129			
Pos-Nr:	MB03-GP005, MB03-GP006 (STBR)				Best-Nr.:	4500325922 - Khatoonabad			
Item No.:					Order No.:				
Rep no.:					Cde. no.:				
Kom.-Nr.:	W103011 / R 1706.1405				Pumpen-Nr.:	348651 - 348652			
Contract No.:					Pump No.:				
Com. no.:					Pumpe no.:				
Nr.	Anz.	Datum	Name	Art der Änderung					
Abweichungen von der zeichnerischen Darstellung vorbehalten									
Maßstab: %		Datum		Name		GVS0 - 150 - 355 A			
Bearb. 18.07.2017		S. Missler		Lgtr. 3					
Gepr. 19.07.2017		A. Scherer							
Norm									
Schutzvermerk		RHEINHÜTTE PUMPEN		Schnittzeichnungs-Nr.		SZ-17061405		Revision	
nach ISO 16016 beachten								00	

BI = SPERR - MEDIUM EIN / SEAL MEDIUM INLET

Date : 20.07.2017

CUSTOMERS PART LIST

Page : 1

Order no. :	W103011	Prepared by :	11.07.17 Missler, Stefan
Project :	2010189 R 1706.1.405	Revised by :	11.07.17 Missler, Stefan
Type :	GVSO 150/355 A	Revision :	
Pump No. :	348651 / 348652	Reference :	
Customer :	K54601 Outotec GmbH &Co. KG		
Cust. order number :	4500325922 - Khatoonabad		

DIN Pos Nummern in der Stückliste sind in der Aufstellungs-/ oder Schnittzeichnung dargestellt.

DIN Position numbers in the parts list are shown in the General Arrangement Drawing or Sectional Drawing.

Production item : R 1706.1.405

GVSO 150/355 A
 Quantity : 2,0000, Unit : st

DIN Pos No.	Pos Code / DIN	Part	Material / Mat. comb.	ASTM-Code	Dimension / Material	Quantity	
						1 x	Total
102.000.0	1501329011037327	volute casing	1.4517	ASTM A890 Grade 1B (CD4MCuN)		1	2
102.902.0	3160939027711100	stud	1.4136	Ferritic stainless steel	M16X40 SIEHE ZEI	12	24
	DIN 939						
102.920.0	3990934097711100	hexagon nut	1.4136	Ferritic stainless steel	M16 SIEHE ZEICH	12	24
	DIN 934						
144.000.0	1506698010041727	delivery elbow	ST/VA		1.0038/RHSX	1	2
144.550.0	RH17036	washer	A2	Grade 304	10- 200HV	1	2
	ISO 7089						
144.550.1	RH17038	washer	A2	Grade 304	20- 200HV	14	28
	ISO 7089						
144.550.2	RH17093	washer	ST-A2F	Steel Zinc plated	22	14	28
	DIN 434						
144.598.0	1506703017712500	sheet	1.4462	ASTM A182 Grade F51	BL 1X850X1130	1	2
144.724.0	RH2609305	blind flange	1.0432	ASTM A29 Grade 1022	6IN STD/ 150 LBS	1	2
	ASME B16.5						
144.901.0	RH14055	hexagon screw	A2-70	Stainless Steel Grade 304	M 10X14	1	2
	ISO 4017						
144.901.1	RH15098	hexagon screw	A2-70	Stainless Steel Grade 304	M 20X80	8	16
	ISO 4014						
144.902.0	RH15515	stud	A2-70	Stainless Steel Grade 304	M 20X90	14	28
	DIN 939						
144.920.0	RH12120	hexagon nut	A2-70	Stainless Steel Grade 304	M 20	28	56
	ISO 4032						
144.920.1	RH12120	hexagon nut	A2-70	Stainless Steel Grade 304	M 20	8	16
	ISO 4032						

Date : 20.07.2017

CUSTOMERS PART LIST

Page : 2

Order no. :	W103011	Prepared by :	11.07.17 Missler, Stefan
Project :	2010189 R 1706.1.405	Revised by :	11.07.17 Missler, Stefan
Type :	GVSO 150/355 A	Revision :	
Pump No. :	348651 / 348652	Reference :	
Customer :	K54601 Outotec GmbH &Co. KG		
Cust. order number :	4500325922 - Khatoonabad		

Production item : R 1706.1.405

GVSO 150/355 A
 Quantity : 2,0000, Unit : st

DIN Pos No.	Pos Code / DIN	Part	Material /		ASTM-Code	Dimension /	Quantity	
			Mat. comb.				Material	1 x
162.000.0	1054775021037327	suction cover	1.4517		ASTM A890 Grade 1B (CD4MCuN)		1	2
162.901.0	3200931047711100	hexagon screw	1.4136		Ferritic stainless steel	M20X75 SIEHE ZEI	8	16
	DIN 931							
162.920.0	3990934117711100	hexagon nut	1.4136		Ferritic stainless steel	M 20	8	16
	ISO 4032 (Alt DIN934							
210.000.0	1502136227771005	shaft	RH RS			D 75X2814	1	2
210.940.0	3996885157711100	key	1.4136		Ferritic stainless steel	A 14X9X63	1	2
	DIN 6885							
210.940.1	3996885137711100	key	1.4136		Ferritic stainless steel	A 14X6X36	1	2
	DIN 6885							
210.940.2	RH35064	key	1.4571		Stainless Steel Grade 316Ti	A 8X7X25	1	2
	DIN 6885							
210.940.3	RH35120	key	1.4571		Stainless Steel Grade 316Ti	A 14X9X63	1	2
	DIN 6885							
230.000.0	A106380011037366	impeller	1.4517		ASTM A890 Grade 1B (CD4MCuN)		1	2
323.000.0	RH26769	axial ball bearing	STAHL	Steel		7316 BE M	2	4
	DIN 628-1							
341.000.0	1506013070000400	motor stool	ST/ST			1.0038/1.0345	1	2
341.160.0	1505782087710000	cover	1.4541		Stainless Steel Grade 321	BL 1X140X215	2	4
341.550.0	RH17224	washer	A2	Grade 304		6- 100HV	8	16
	ISO 7093-2							
341.550.1	RH17030	washer	PA	Polyamide		6/ RIMP 6/	8	16

Date : 20.07.2017

CUSTOMERS PART LIST

Page : 3

Order no. :	W103011	Prepared by :	11.07.17 Missler, Stefan
Project :	2010189 R 1706.1.405	Revised by :	11.07.17 Missler, Stefan
Type :	GVSO 150/355 A	Revision :	
Pump No. :	348651 / 348652	Reference :	
Customer :	K54601 Outotec GmbH &Co. KG		
Cust. order number :	4500325922 - Khatoonabad		

Production item : R 1706.1.405

GVSO 150/355 A
 Quantity : 2,0000, Unit : st

DIN Pos No.	Pos Code / DIN	Part	Material / Mat. comb.	ASTM-Code	Dimension / Material	Quantity	
						1 x	Total
341.901.0	RH15059 ISO 4014	hexagon screw	A2-70	Stainless Steel Grade 304	M 16X65	8	16
341.914.0	RH14772 ISO 4762	Hexagon Socket Screw	8.8A2F	Steel zinc-plated	M 6X12	8	16
341.920.0	RH12119 ISO 4032	hexagon nut	A2-70	Stainless Steel Grade 304	M 16	8	16
341.930.0	RH17229 DIN 6797	lock	ST-A2F	Steel Zinc plated	A 6,4	8	16
342.000.0	1502303011000000	thrust bearing lantern	GG-20	ASTM A 48 Grade 30B		1	2
342.160.0	1505880037710000	cover	1.4541	Stainless Steel Grade 321	BL 1X254X190	2	4
342.550.0	RH17224 ISO 7093-2	washer	A2	Grade 304	6- 100HV	8	16
342.550.1	RH17030	washer	PA	Polyamide	6/ RIMP 6/	8	16
342.902.0	RH16361 DIN 938	stud	A2-70	Stainless Steel Grade 304	M 20X55	8	16
342.902.1	RH15347 DIN 939	stud	A2-70	Stainless Steel Grade 304	M 20X50	8	16
342.914.0	RH14754 ISO 4762	Hexagon Socket Screw	A2-70	Stainless Steel Grade 304	M 12X35	4	8
342.914.1	RH14772 ISO 4762	Hexagon Socket Screw	8.8A2F	Steel zinc-plated	M 6X12	8	16
342.920.0	RH12120 ISO 4032	hexagon nut	A2-70	Stainless Steel Grade 304	M 20	16	32
342.930.0	RH17229 DIN 6797	lock	ST-A2F	Steel Zinc plated	A 6,4	8	16

Date : 20.07.2017

CUSTOMERS PART LIST

Page : 4

Order no. :	W103011	Prepared by :	11.07.17 Missler, Stefan
Project :	2010189 R 1706.1.405	Revised by :	11.07.17 Missler, Stefan
Type :	GVSO 150/355 A	Revision :	
Pump No. :	348651 / 348652	Reference :	
Customer :	K54601 Outotec GmbH &Co. KG		
Cust. order number :	4500325922 - Khatoonabad		

Production item : R 1706.1.405

GVSO 150/355 A
 Quantity : 2,0000, Unit : st

DIN Pos No.	Pos Code / DIN	Part	Material /		ASTM-Code	Dimension /		Quantity	
			Mat. comb.			Material		1 x	Total
350.000.0	1502307011000000	bearing housing	GG-20		ASTM A 48 Grade 30B			1	2
350.636.0	RH34401	grease nipple	5.8A2F		Steel zinc-plated	H1/ R 1/4/		1	2
350.734.0	RH25691	fitting	1.4571		Stainless Steel Grade 316Ti	DONIP- DN8-R1/4X		1	2
	EN 10241								
350.734.1	RH25777	fitting	1.4571		Stainless Steel Grade 316Ti	RP1/4 MUFFE		1	2
	EN 10241								
350.914.0	RH14740	Hexagon Socket Screw	A2-70		Stainless Steel Grade 304	M 12X25		4	8
	ISO 4762								
361.000.0	1502311011000000	bearing end cover	GG-20		ASTM A 48 Grade 30B			1	2
386.000.0	1502313031905605	thrust bearing ring	1.0503		ASTM A 576 Grade 1045	GZD 125X112		1	2
451.000.0	1502911081037300	stuffing box housing	1.4517		ASTM A890 Grade 1B (CD4MCuN)			1	2
451.550.0	RH17039	washer	A2		Grade 304	16- 200HV		2	4
	ISO 7089								
451.734.0	RH25681	fitting	1.4571		Stainless Steel Grade 316Ti	DONIP- DN8-R1/4X		1	2
	EN 10241								
451.734.1	RH25888	fitting	1.4401		ASTM A 276 Grade 316	G1/4 HEXAGON CAP		1	2
451.902.0	RH15488	stud	A2-70		Stainless Steel Grade 304	M 16X60		2	4
	DIN 939								
451.914.0	RH14837	Hexagon Socket Screw	A2-70		Stainless Steel Grade 304	M 10X25		5	10
	ISO 4762								
451.920.0	RH12119	hexagon nut	A2-70		Stainless Steel Grade 304	M 16		2	4
	ISO 4032								

Date : 20.07.2017

CUSTOMERS PART LIST

Page : 5

Order no. :	W103011	Prepared by :	11.07.17 Missler, Stefan
Project :	2010189 R 1706.1.405	Revised by :	11.07.17 Missler, Stefan
Type :	GVSO 150/355 A	Revision :	
Pump No. :	348651 / 348652	Reference :	
Customer :	K54601 Outotec GmbH &Co. KG		
Cust. order number :	4500325922 - Khatoonabad		

Production item : R 1706.1.405

GVSO 150/355 A
 Quantity : 2,0000, Unit : st

DIN Pos No.	Pos Code / DIN	Part	Material / Mat. comb.	ASTM-Code	Dimension / Material	Quantity	
						1 x	Total
452.000.0	1063678017710500	gland	1.4571	Stainless Steel Grade 316Ti	BL 35X190X110	1	2
458.000.0	1026433101040100	lantern ring	2.4686	ASTM A494 Grade CW12MW	1 RING=2 TEILE	1	2
461.000.0	3000032503332700	stuffing box packing	RP 27	PTFE fibers carbon impregnated	D 95/70X12,5	6	12
504.000.0	1064561351905205	distance ring	1.0503	ASTM A 576 Grade 1045	GZD 105X15	1	2
506.000.0	1063908011070300	retaining ring	1.4136S	Ferritic stainless steel		1	2
506.914.0	3100084087711100 ISO 1207 >alt DIN84	Hexagon Socket Screw	1.4136	Ferritic stainless steel	M10X30 SIEHE ZEI	2	4
523.000.0	1083811092065505	shaft sleeve	RH RS		D 75X262	1	2
524.000.0	1065493012065505	shaft sleeve	RH RS		D 75X262	1	2
525.000.0	1502314032378000	Distance sleeve	1.5217	ASTM A 381	HO 80/40X212	1	2
545.000.0	1083776011014100	bearing bushing	SIGUSS			1	2
550.000.0	RH17417 DIN 988	washer	FEDST	spring steel	S 50X62X3,0	1	2
551.000.0	RH17375 DIN 988	dist washer	STAHL	Steel	50X62X0,5	2	4
551.000.1	RH17384 DIN 988	dist washer	STAHL	Steel	50X62X1,0	2	4
551.000.2	RH17374 DIN 988	dist washer	STAHL	Steel	50X62X0,3	2	4

Date : 20.07.2017

CUSTOMERS PART LIST

Page : 6

Order no. :	W103011	Prepared by :	11.07.17 Missler, Stefan
Project :	2010189 R 1706.1.405	Revised by :	11.07.17 Missler, Stefan
Type :	GVSO 150/355 A	Revision :	
Pump No. :	348651 / 348652	Reference :	
Customer :	K54601 Outotec GmbH &Co. KG		
Cust. order number :	4500325922 - Khatoonabad		

Production item : R 1706.1.405

GVSO 150/355 A
 Quantity : 2,0000, Unit : st

DIN Pos No.	Pos Code / DIN	Part	Material / Mat. comb.	ASTM-Code	Dimension / Material	Quantity	
						1 x	Total
713.000.0	1500184520030727	delivery suspension pipe	VA/VA	austenitic stainless steel	RHSX/RHSX	1	2
713.902.0	3160939027711100	stud	1.4136	Ferritic stainless steel	M16X40 SIEHE ZEI	14	28
	DIN 939						
713.902.1	RH15573	stud	A4-70	Grade 316 or 316Ti	M 16X40	14	28
	DIN 939						
713.920.0	3990934097711100	hexagon nut	1.4136	Ferritic stainless steel	M16 SIEHE ZEICH	14	28
	DIN 934						
713.920.1	1061799017711100	hexagon nut	1.4136	Ferritic stainless steel	M16X2 SIEHE ZEIC	14	28
716.000.0	1506706010030705	Saugrohr	VA/VA	austenitic stainless steel	RHSX/RHSX	1	2
740.000.0	10	Ball Valve			N-EUPEX B 180	1	2
800.000.0	20	motor			IEC 280M	1	2
921.000.0	RH12322	shaft nut	STAHL	Steel	M 50X1,5/KMK 10/	1	2
922.000.0	1064927010034300	impeller nut	VA/VA	austenitic stainless steel	4136 S/1.4571	1	2
102.400.0	3000366893344600	gasket	RF 46	Expanded PTFE	D 680/610X0,8	1	2
144.400.0	3000072383344600	gasket	RF 46	Expanded PTFE	359X184X0,8	1	2
144.400.1	3100151123342000	gasket	RF 20	Nitrile butadiene rubber NBR	D 222X2 -C150,6l	1	2
144.400.2	3000067823344600	gasket	RF 46	Expanded PTFE	1058X780X3,2	1	2
230.412.0	3000041423327800	o-ring	PTFE	Polytetrafluoroethylene	62X4	2	4
361.412.0	3000043813327200	o-ring	VITON	Fluoroelastomer FKM	165X3	1	2
361.421.0	RH33648	radial shaft sealing ring	NBR902	Nitrile butadiene rubber 902	48X62X8 BAUSLX	1	2

Date : 20.07.2017

CUSTOMERS PART LIST

Page : 7

Order no. :	W103011	Prepared by :	11.07.17 Missler, Stefan
Project :	2010189 R 1706.1.405	Revised by :	11.07.17 Missler, Stefan
Type :	GVSO 150/355 A	Revision :	
Pump No. :	348651 / 348652	Reference :	
Customer :	K54601 Outotec GmbH &Co. KG		
Cust. order number :	4500325922 - Khatoonabad		

Production item : R 1706.1.405

GVSO 150/355 A
 Quantity : 2,0000, Unit : st

DIN Pos No.	Pos Code / DIN	Part	Material /	ASTM-Code	Dimension /	Quantity	
			Mat. comb.		Material	1 x	Total
451.400.0	3000017223344600	gasket	RF 46	Expanded PTFE	D 150/125X0,8	1	2
523.400.0	3000027103343400	gasket	RF 34	Glas fibers with PTFE	D 70/50X0,25	1	2
524.412.0	3000041343327800	o-ring	PTFE	Polytetrafluoroethylene	57X4	1	2
713.400.0	3000063203344600	gasket	RF 46	Expanded PTFE	430X250X0,8	2	4
713.400.1	3000008333344600	gasket	RF 46	Expanded PTFE	D 26/16X0,8	14	28
716.400.0	3000025753344600	gasket	RF 46	Expanded PTFE	D 273/220X1,6-DI	1	2
922.400.0	3000027233343400	gasket	RF 34	Glas fibers with PTFE	D 64/50X0,25	1	2